



European *T*echnical *C*enter
for Engineering & Distribution GmbH



ETC-Distribution
www.etc-distribution.com

Catálogos

Catalogues

Catalogue

Katalog

Seitenkanalverdichter



Zubehoer fuer.....

Side Channel blowers



Accessories for.....

Soufflantes pour vide et pression



Accessoires pour.....

Soplanes de Canal Lateral por Vacio e Presion



Accesorios para.....

Deutsch

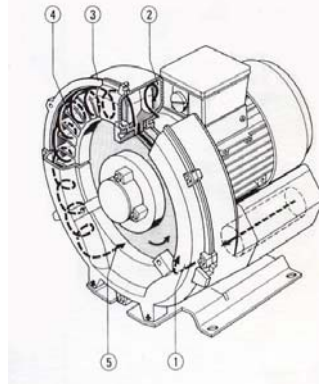
English

Francaise

Espanol

Seitenkanalverdichter fuer Vakuum und Druck

- 1) Luft/Gas tritt am Eingangstutzen ein und wird mit den Schaufel des Laufrades in Drehrichtung mitgerissen.
- 2) Das hoch effiziente Design des Laufrades beschleunigt die Luft/Gas und drueckt sie in den Seitenkanal.
- 3) Im Seitenkanal wird die hohe Velozitaet in Druck umgewandelt die dann zurueck zum Schaufelrad umgelenkt wird.
- 4) Diese Spiraldrehrichtung wird bis zum Austritt des Gases/Luft am Austrittsstutzen weitergefuehrt.
- 5) Der regenerative Prozess resultiert in einem hohen Druckdifferential.



Eigenschaften	Anwendungen
- Materialgarantie von 24 Monaten	- Mischen
	- Wasseraufbereitung
- Standards CE / UL / CSA	- Gewaesserbelueftung
	- Industrial Vakuumeinheiten
- Fast Wartungsfrei	- Gas Analyse
	- Balneotherapie / Spa / Schwimmbaeder
Kein pulsierender Volumenstrom	- Papier- und Karton Verpackungen / "Falten"
	- Textile Maschinen
- Sehr Leise Betriebsbedingungen	- Allgm. Verpackungen
	- Vakuumhalten
- Elektrische Weitbereichsmotoren IP54; Frequenzbereich 50 & 60 Hz	- Trocknung
	- Pneumatisches foerdern
- Kompaktes Design	

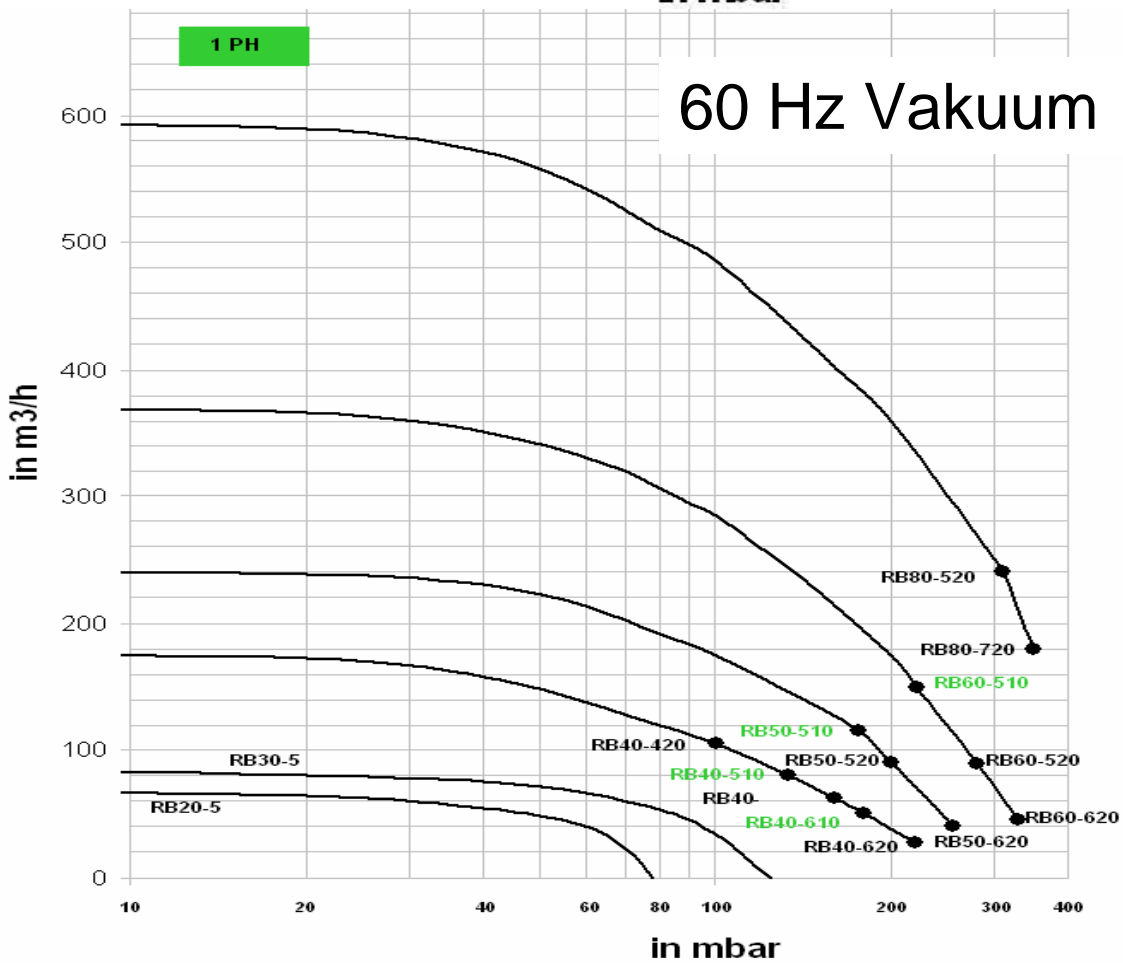
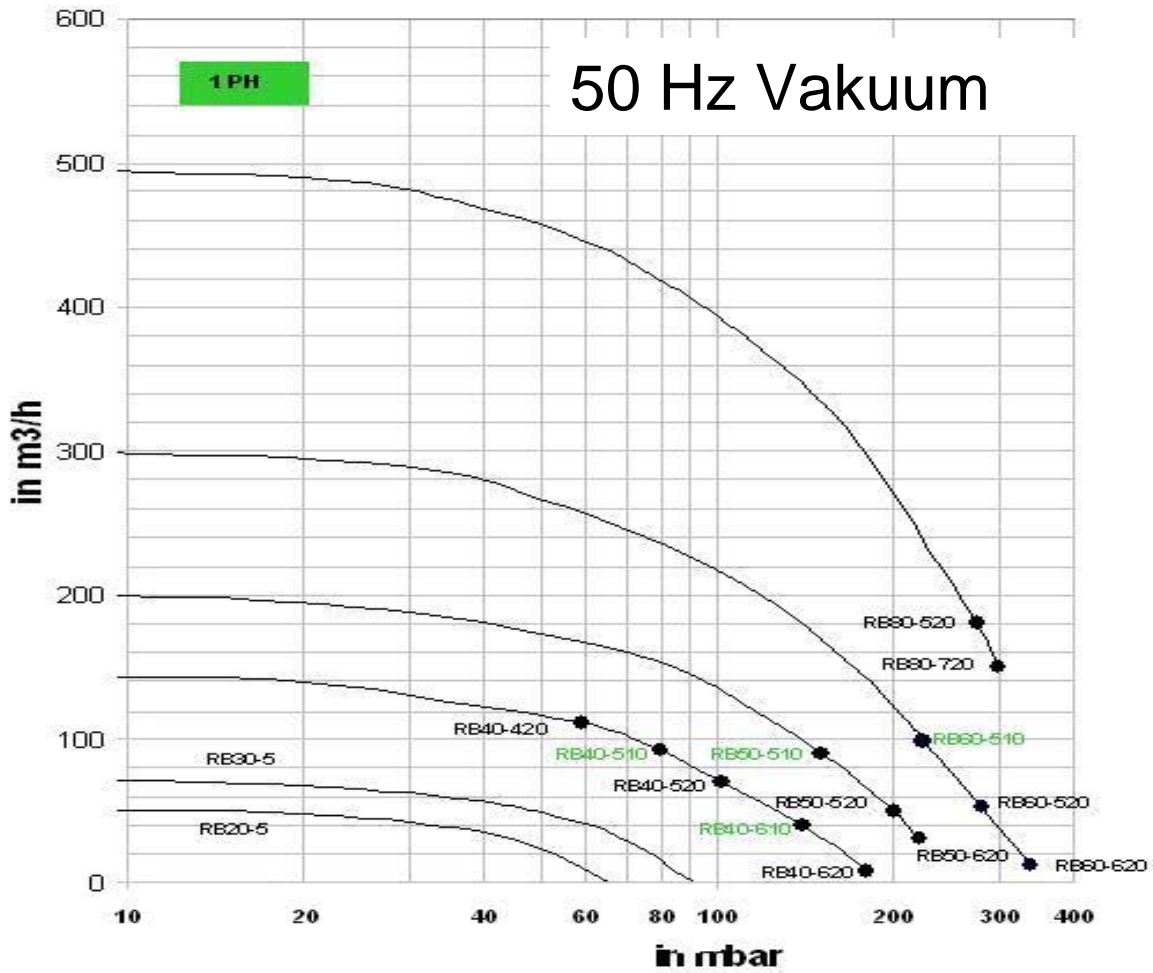
Serie	Model	max Volumenstrom (Nm ³ /h)	max Druck (mbar)	max Vakuum (mbar)	Volt	Phase	Hz	Leistung (kW)	Gewicht (kg)
RB20	RB20-510	58	65	60	100-120 V / 200-240 V	1 Ph	50Hz / 60HZ	0.22 kW	10
	RB20-520	58	65	60	200-240 V / 380-440 V	3 Ph	50Hz / 60HZ	0.22 kW	10
RB30	RB30-510	75	100	95	100-120 V / 200-240 V	1 Ph	50Hz / 60HZ	0.38 kW	13
	RB30-520	75	100	95	200-240 V / 380-440 V	3 Ph	50Hz / 60HZ	0.38 kW	13
RB40	RB40-510	144	160	150	100-120 V / 200-240 V	1 Ph	50Hz / 60HZ	0.8 kW	16
	RB40-610	144	190	170	100-120 V / 200-240 V	1 Ph	50Hz / 60HZ	1.1 kW	18.2
	RB40-420	144	140	140	200-240 V / 380-440 V	3 Ph	50Hz / 60HZ	0.76 kW	15.5
	RB40-520	144	180	170	200-240 V / 380-440 V	3 Ph	50Hz / 60HZ	0.9 kW	16
	RB40-620	144	200	180	200-240 V / 380-440 V	3 Ph	50Hz / 60HZ	1.1 kW	18.2
RB50	RB50-510	210	200	185	100-120 V / 200-240 V	1 Ph	50Hz / 60HZ	1.5 kW	23.5
	RB50-520	210	220	210	200-240 V / 380-440 V	3 Ph	50Hz / 60HZ	1.5 kW	23.5
	RB50-620	210	270	220	200-240 V / 380-440 V	3 Ph	50Hz / 60HZ	2.2 kW	26
RB60	RB60-520	306	220	230	200-240 V / 380-440 V	3 Ph	50Hz / 60HZ	2.2 kW	36
	RB60-620	306	280	250	200-240 V / 380-440 V	3 Ph	50Hz / 60HZ	3 kW	37.3
	RB60-720	306	340	270	200-240 V / 380-440 V	3 Ph	50Hz / 60HZ	4 kW	41.5
RB80	RB80-520	500	310	270	200-240 V / 380-440 V	3 Ph	50Hz / 60HZ	5.5 kW	
	RB80-620	500	400	300	200-240 V / 380-440 V	3 Ph	50Hz / 60HZ	7.5 kW	

*) gemessen in 1m Entfernung vom Geblase

Angaben fuer 50 Hz Maschine 60 Hz auf Anfrage

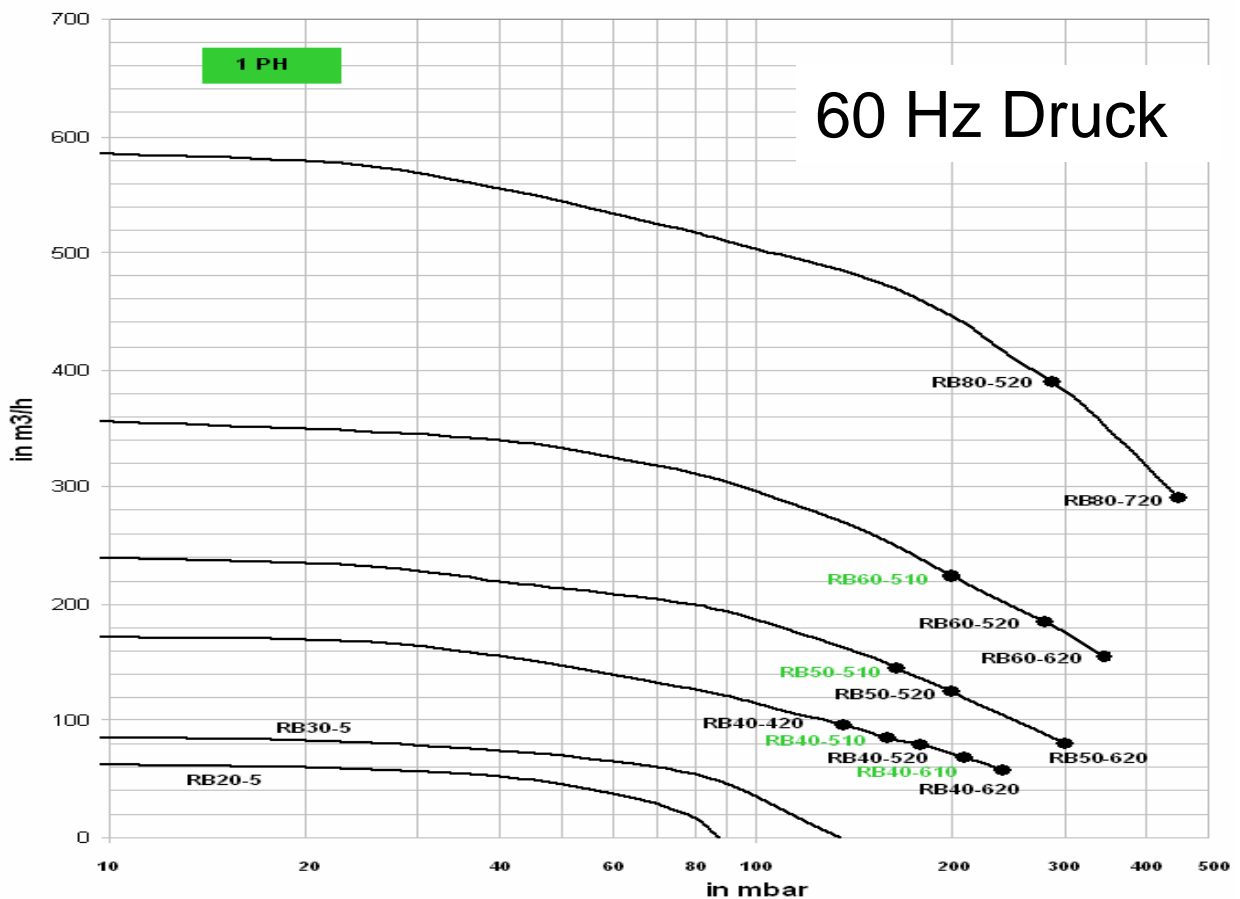
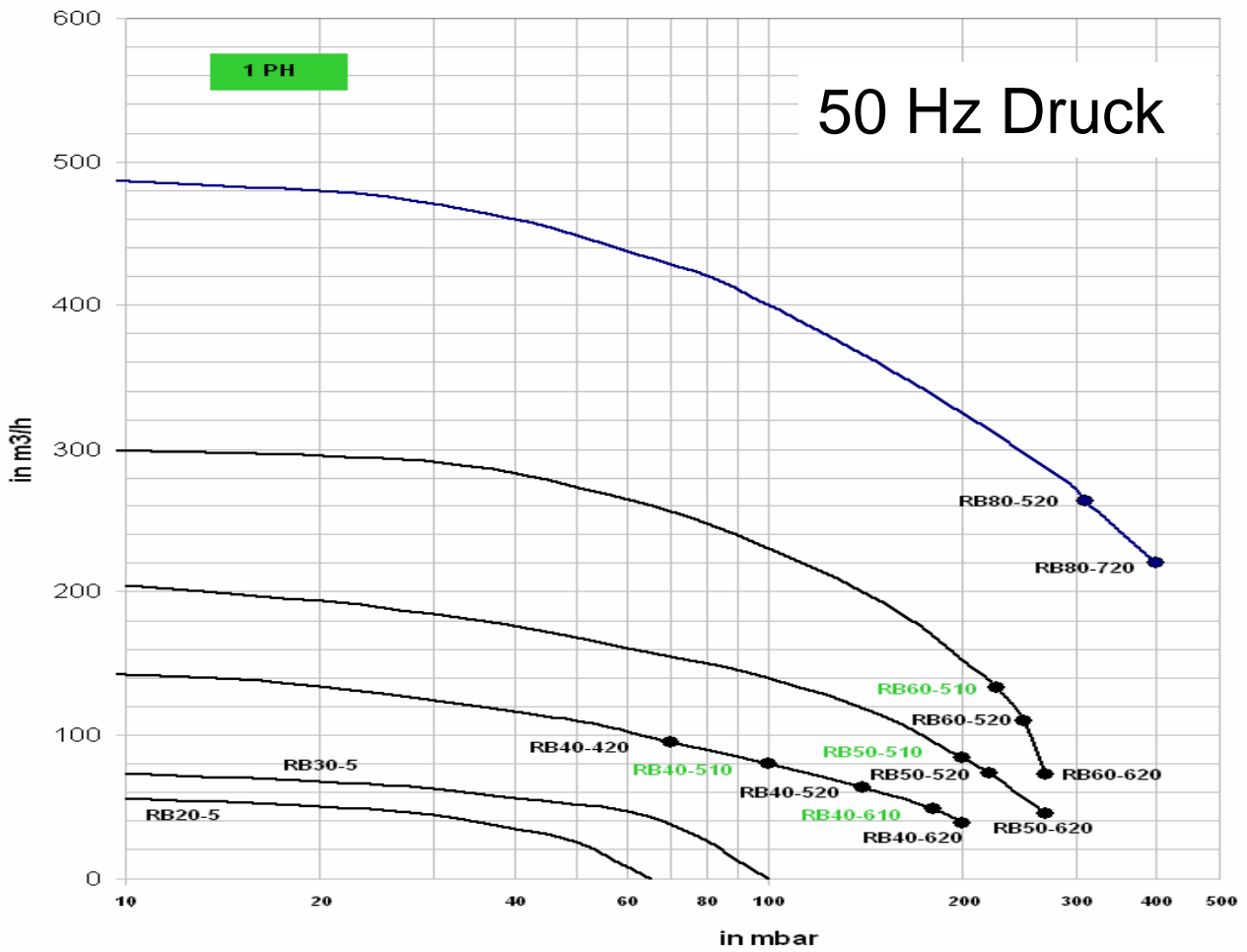
Seitenkanalverdichter fuer Vakuum und Druck

Deutsch



Seitenkanalverdichter fuer Vakuum und Druck

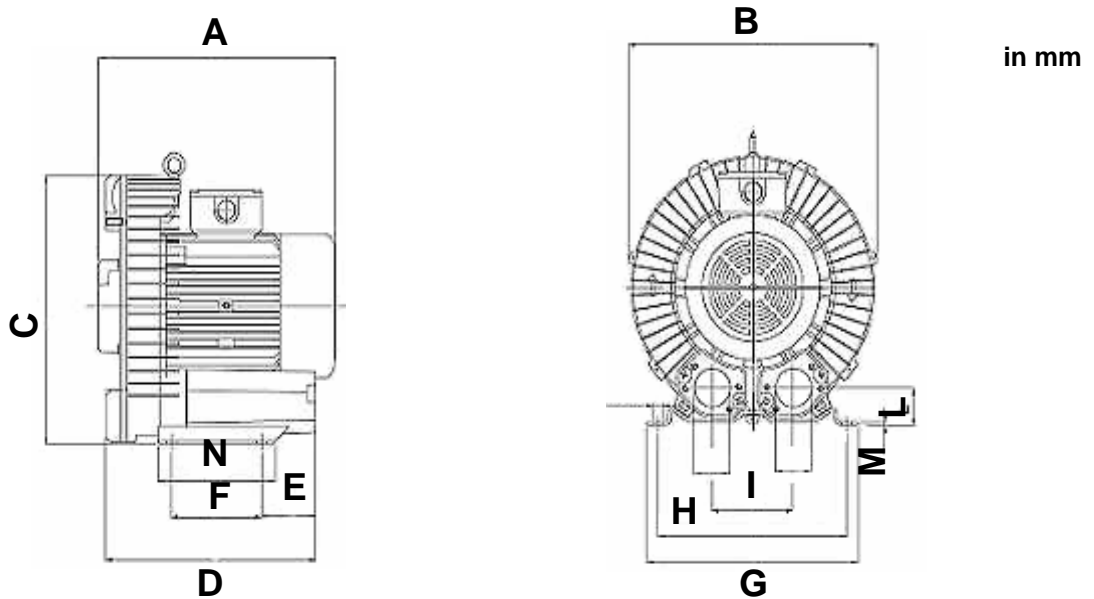
Deutsch



Seitenkanalverdichter fuer Vakuum und Druck

Deutsch

Model	A	B	C	D	E	F	G	H	I	L	M	N	Ø 1	Ø 2	net kg
RB 20-510	255	228	238	218	87	76	212	190	90	34	12	100	1"	1"	10
RB 20-520	255	228	238	218	87	76	212	190	90	34	12	100	1"	1"	10
RB 30-510	256	250	257	262	117	83	230	205	100	38	12	110	1" 1/4	1" 1/2	13
RB 30-520	256	250	257	262	117	83	230	205	100	38	12	110	1" 1/4	1" 1/2	13
RB 40-510	262	286	303	238	68	95	255	225	115	46	3	130	1" 1/2	1" 1/2	16
RB 40-610	281	286	303	238	68	95	255	225	115	46	3	130	1" 1/2	1" 1/2	18,2
RB 40-420	261	286	303	238	68	95	255	225	115	46	3	130	1" 1/2	1" 1/2	15,5
RB 40-520	262	286	303	238	68	95	255	225	115	46	3	130	1" 1/2	1" 1/2	16
RB 40-620	281	286	303	238	68	95	255	225	115	46	3	130	1" 1/2	1" 1/2	18,2
RB 50-510	317	33	345	342	143	115	296	260	120	48	4	155	2"	2"	23,5
RB 50-520	317	33	345	342	143	115	296	260	120	48	4	155	2"	2"	23,5
RB 50-620	317	33	345	341	143	115	296	260	120	48	4	155	2"	2"	26
RB 60-520	364	382	383	379	129	140	325	390	125	53	5	180	2"	2"	36
RB 60-620	364	382	383	379	129	140	325	390	125	53	5	180	2"	2"	37,3
RB 60-720	364	382	383	379	129	140	325	390	125	53	5	180	2"	2"	41,5
RB 80520	479	466	498	477	179	277	420	365	145	81	24	316	2" 1/2	2" 1/2	120
RB 80620	479	466	498	477	179	277	420	365	145	81	24	316	2" 1/2	2" 1/2	123

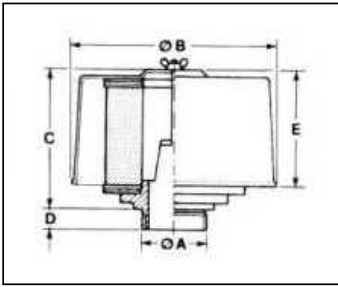


Modell	Package Unit per blower	Dimension (cm) approx	Gross Weight in kg	Units per Pallet	Dimension (cm) approx	Gross Weight in kg
RB 20-	1 pc Wooden case	40 x 37 x 39	20	60	113 x 95 x 160	750
RB 30-	1 pc Wooden case	47 x 46 x 46	25	36	116 x 113 x 157	570
RB 40-	1 pc Wooden case	48 x 47 x 49	30	24	76 x 110 x 156	470
RB 50-	1 pc Wooden case	54 x 51 x 52	40	24	92 x 127 x 185	720
RB 60-	1 pc carton		49	18	96 x 144 x 168	806
RB 80-	1 pc Wooden case	80 x 62 x 70	125			

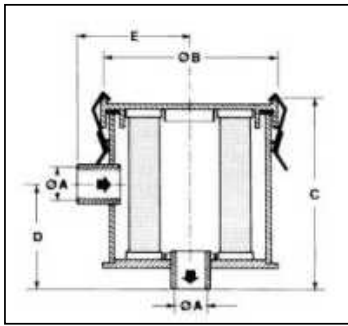
Dimension

Seitenkanalverdichter fuer Vakuum und Druck

Deutsch



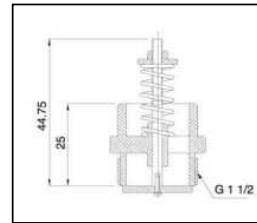
Inlet-Filter for Blowers								
Type	Machine	ϕA	ϕB	C	D	E	Wt. Kg	Cartridge
F4	RB20-	1"	97	90	12	98	0.3	C4
F5	RB30-	1" 1/4	152	105	15	86	0.4	C5
F6	RB40-	1" 1/2	152	105	15	86	0.4	C6
F7	RB50-/60-	2"	192	162	18	145	0.9	C7



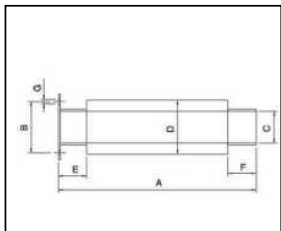
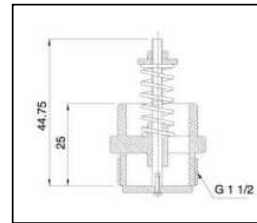
In-line Filter for Suction								
Type	Machine	ϕA	ϕB	C	D	E	Wt. Kg	Element
IF4	RB20-	1"	133	102	53	78	1	FE4A
IF5	RB30-	1" 1/4	170	158	93	96	1.8	FE5A
IF6	RB40-	1" 1/2	170	188	124	100	2.1	FE6A
IF7	RB50-/60-	2"	200	258	124	114	3.8	FE7A



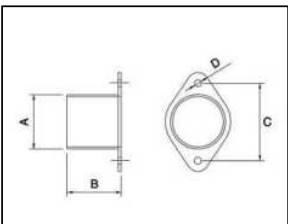
Pressure relief valve for blowers		
Type	Machine	Wt. Kg
FR1	For RB40 / RB50 / RB60	0.4



Vacuum relief valve for suction		
Type	Machine	Wt. Kg
VR1	For RB40 / RB50 / RB60	0.4



Additional Silencer								
Type	Machine	A	B	C	D	E	G	Wt. Kg
AS1	RB20-/30-	260	55-64	38	60	40	6.5	0.85
AS2	RB40-	280	72	50	76	40	6.5	1.01
AS3	RB50-/60-	280	82.5	60	89	40	9	1.4

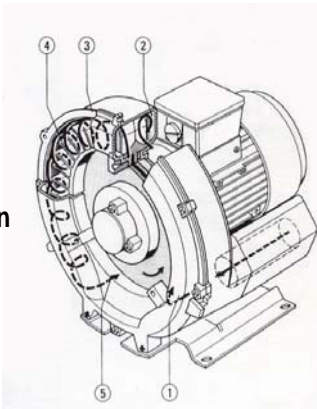


Hose Flange						
Type	Machine	A	B	C	D	Wt. Kg
HF1	RB20-/30-	38.1	50	55-64	6.5	0.2
HF2	RB40-	50.8	50	72	6.5	0.2
HF3	RB50-/60-	60	50	82.5	9	0.2

Zubehör

Side Channel Blowers for Vacuum and Pressure

- 1) Gas enters the inlet port and is picked up by the blades of the impeller
- 2) The unique, highly efficient design of the impeller accelerates and pushes the air/gas into the side channel
- 3) In the side channel, this velocity is converted into pressure/vacuum and forced back towards the impeller.
- 4) The spiral path continues until the air/gas exists the discharge port.
- 5) The regenerative process results in a high pressure differentials.



Characteristics	Applications Types
- Material warranty 24 month	- Agitation
	- Watertreatment
- Standards CE / UL / CSA	- Pond Aeration
	- Industrial Vacuumunits
- Maintenance Free	- Gas Analysis
	- Balneotherapie / Spa
- Non pulsating air flow	- Paper and carton box packaging/ folding
	- Textile Machinery
- Silent operation	- Packaging
	- Vacuum holding
- Electrical motors IP54; World frequency motors	- Drying
	- Pneumatic Conveying
- Small compact design	

English

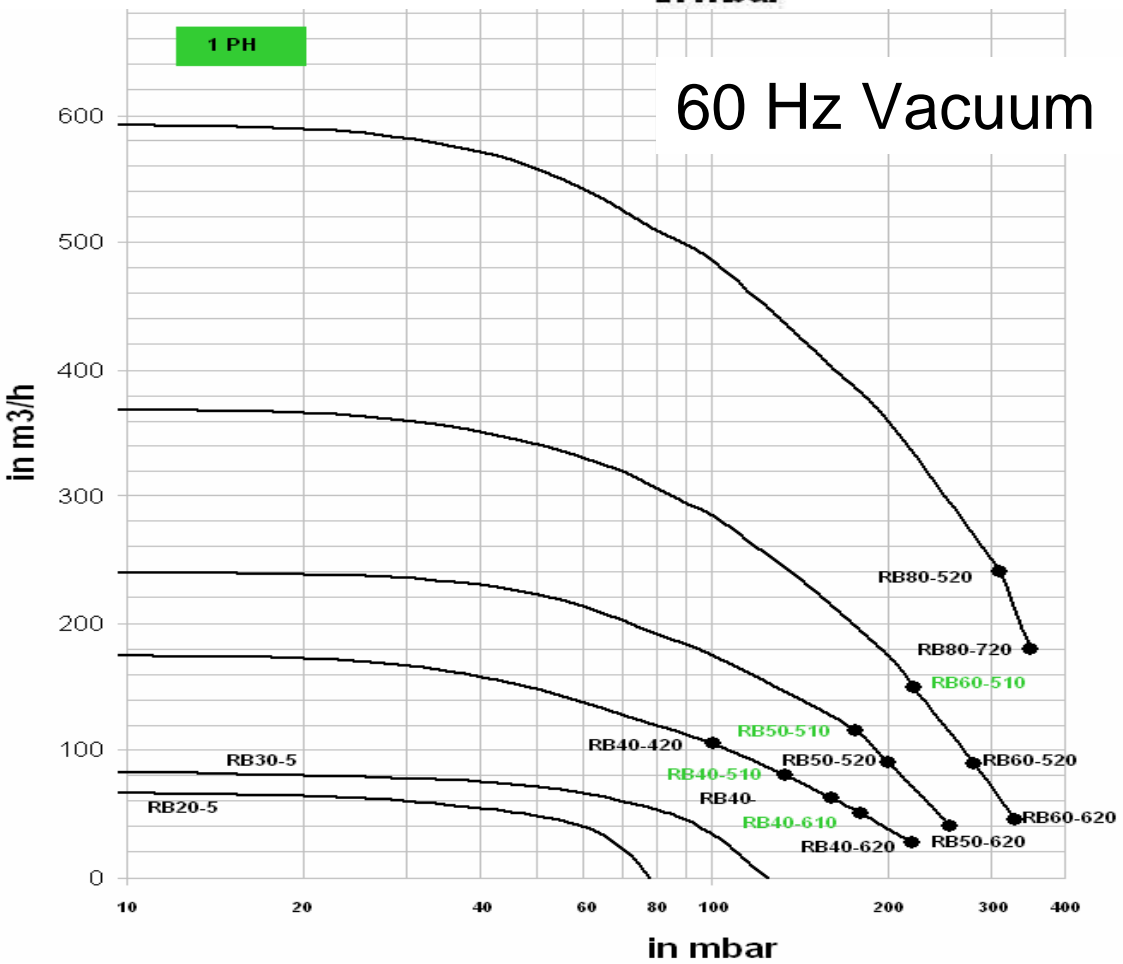
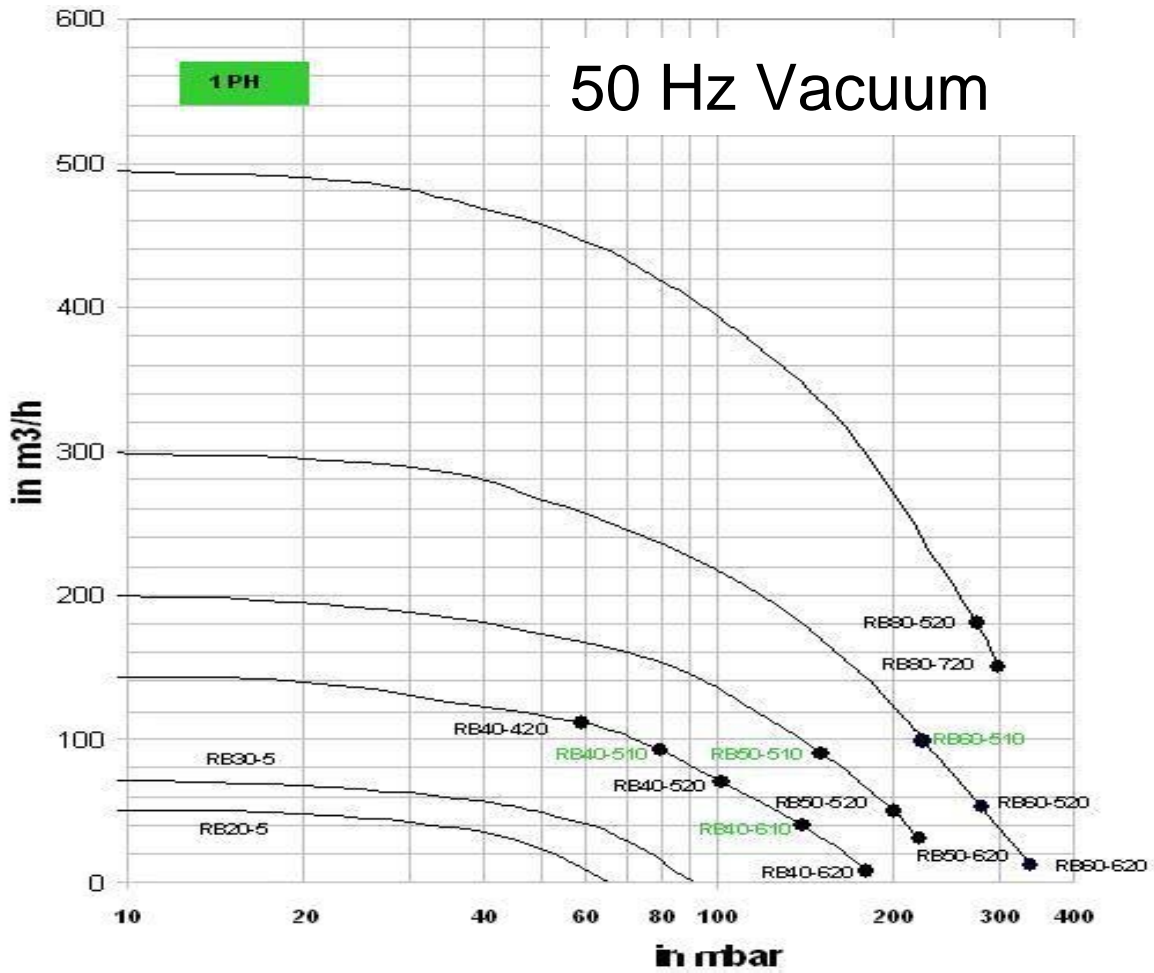
Series	Modell	max open Flow (Nm ³ /h)	max pressure (mbar)	max vacuum (mbar)	Voltage	Phase	Hz	Power (kW)	Weight (kg)
RB20	RB20-510	58	65	60	100-120 V / 200-240 V	1 Ph	50Hz / 60HZ	0.22 kW	10
	RB20-520	58	65	60	200-240 V / 380-440 V	3 Ph	50Hz / 60HZ	0.22 kW	10
RB30	RB30-510	75	100	95	100-120 V / 200-240 V	1 Ph	50Hz / 60HZ	0.38 kW	13
	RB30-520	75	100	95	200-240 V / 380-440 V	3 Ph	50Hz / 60HZ	0.38 kW	13
RB40	RB40-510	144	160	150	100-120 V / 200-240 V	1 Ph	50Hz / 60HZ	0.8 kW	16
	RB40-610	144	190	170	100-120 V / 200-240 V	1 Ph	50Hz / 60HZ	1.1 kW	18.2
	RB40-420	144	140	140	200-240 V / 380-440 V	3 Ph	50Hz / 60HZ	0.76 kW	15.5
	RB40-520	144	180	170	200-240 V / 380-440 V	3 Ph	50Hz / 60HZ	0.9 kW	16
	RB40-620	144	200	180	200-240 V / 380-440 V	3 Ph	50Hz / 60HZ	1.1 kW	18.2
RB50	RB50-510	210	200	185	100-120 V / 200-240 V	1 Ph	50Hz / 60HZ	1.5 kW	23.5
	RB50-520	210	220	210	200-240 V / 380-440 V	3 Ph	50Hz / 60HZ	1.5 kW	23.5
	RB50-620	210	270	220	200-240 V / 380-440 V	3 Ph	50Hz / 60HZ	2.2 kW	26
RB60	RB60-520	306	220	230	200-240 V / 380-440 V	3 Ph	50Hz / 60HZ	2.2 kW	36
	RB60-620	306	280	250	200-240 V / 380-440 V	3 Ph	50Hz / 60HZ	3 kW	37.3
	RB60-720	306	340	270	200-240 V / 380-440 V	3 Ph	50Hz / 60HZ	4 kW	41.5
RB80	RB80-520	500	310	270	200-240 V / 380-440 V	3 Ph	50Hz / 60HZ	5.5 kW	
	RB80-620	500	400	300	200-240 V / 380-440 V	3 Ph	50Hz / 60HZ	7.5 kW	

measured 1m away from unit

All above data at 50 Hz only for 60 Hz please inquire

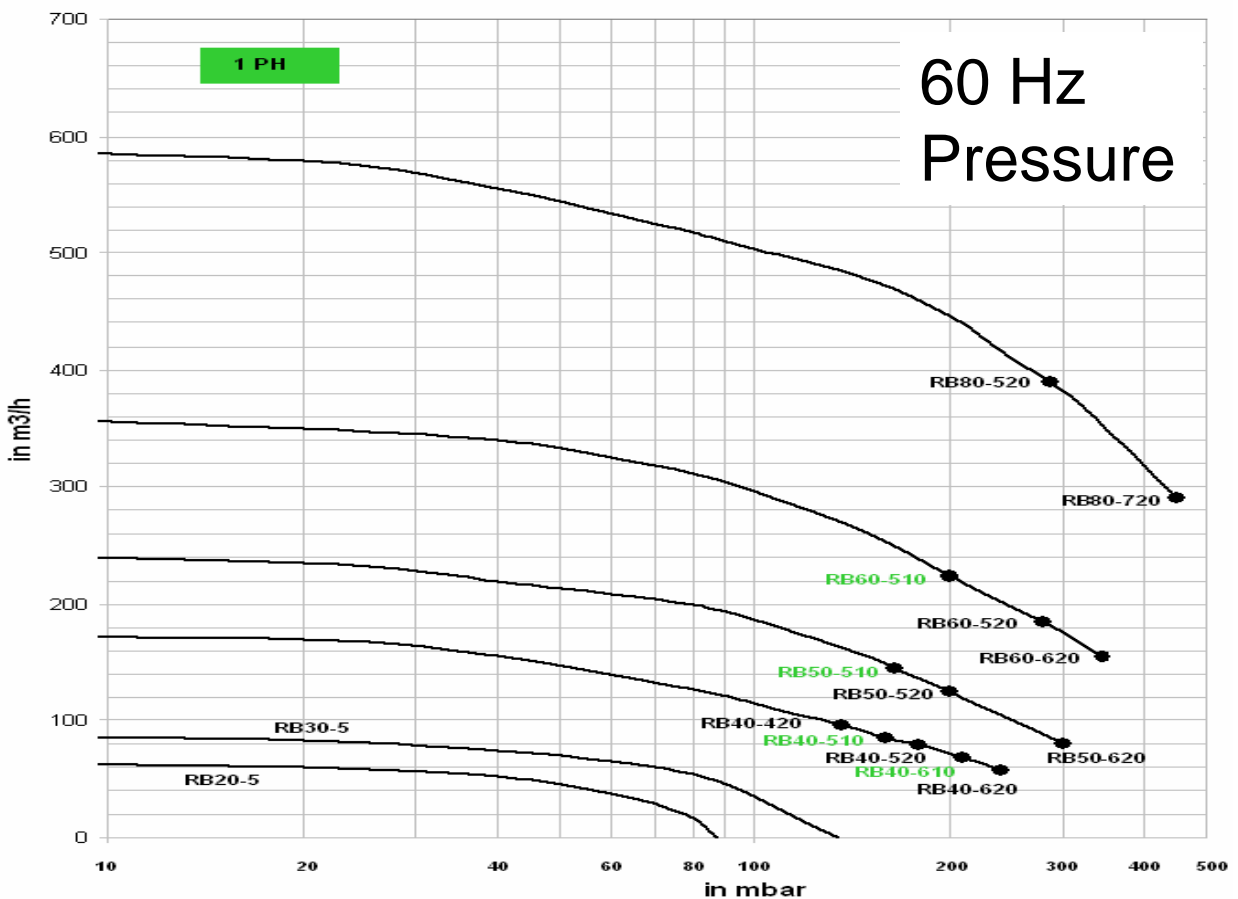
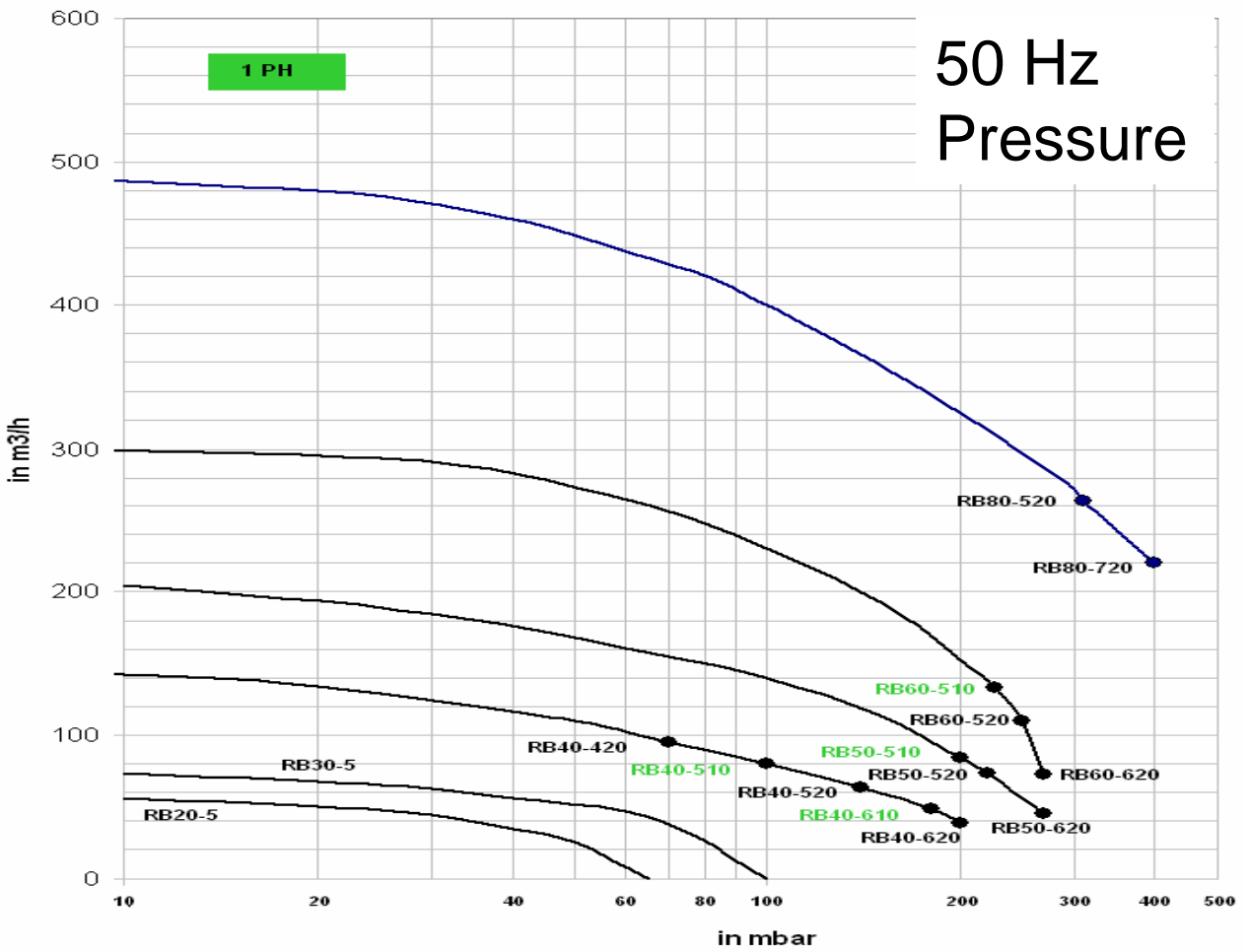
Side Channel Blowers for Vacuum and Pressure

Deutsch



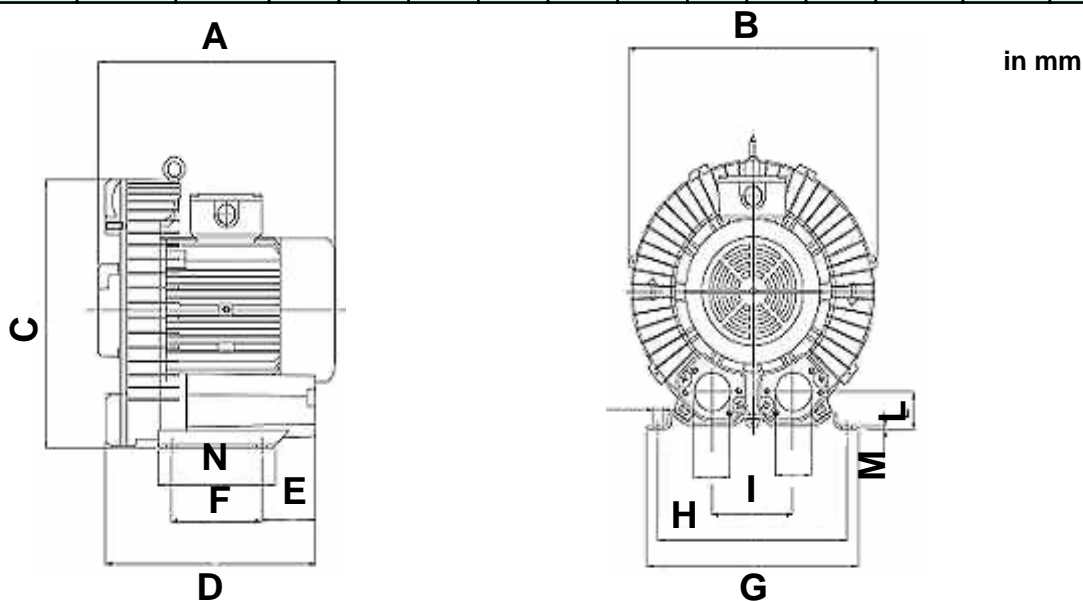
Side Channel Blowers for Vacuum and Pressure

Deutsch



Side Channel Blowers for Vacuum and Pressure

Model	A	B	C	D	E	F	G	H	I	L	M	N	Ø 1	Ø 2	net kg
RB 20-510	255	228	238	218	87	76	212	190	90	34	12	100	1"	1"	10
RB 20-520	255	228	238	218	87	76	212	190	90	34	12	100	1"	1"	10
RB 30-510	256	250	257	262	117	83	230	205	100	38	12	110	1" 1/4	1" 1/2	13
RB 30-520	256	250	257	262	117	83	230	205	100	38	12	110	1" 1/4	1" 1/2	13
RB 40-510	262	286	303	238	68	95	255	225	115	46	3	130	1" 1/2	1" 1/2	16
RB 40-610	281	286	303	238	68	95	255	225	115	46	3	130	1" 1/2	1" 1/2	18,2
RB 40-420	261	286	303	238	68	95	255	225	115	46	3	130	1" 1/2	1" 1/2	15,5
RB 40-520	262	286	303	238	68	95	255	225	115	46	3	130	1" 1/2	1" 1/2	16
RB 40-620	281	286	303	238	68	95	255	225	115	46	3	130	1" 1/2	1" 1/2	18,2
RB 50-510	317	33	345	342	143	115	296	260	120	48	4	155	2"	2"	23,5
RB 50-520	317	33	345	342	143	115	296	260	120	48	4	155	2"	2"	23,5
RB 50-620	317	33	345	341	143	115	296	260	120	48	4	155	2"	2"	26
RB 60-520	364	382	383	379	129	140	325	390	125	53	5	180	2"	2"	36
RB 60-620	364	382	383	379	129	140	325	390	125	53	5	180	2"	2"	37,3
RB 60-720	364	382	383	379	129	140	325	390	125	53	5	180	2"	2"	41,5
RB 80520	479	466	498	477	179	277	420	365	145	81	24	316	2" 1/2	2" 1/2	120
RB 80620	479	466	498	477	179	277	420	365	145	81	24	316	2" 1/2	2" 1/2	123

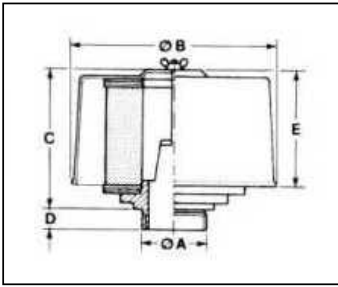


Modell	Package Unit per blower	Dimension (cm) approx	Gross Weight in kg	Units per Pallet	Dimension (cm) approx	Gross Weight in kg
RB 20-	1 pc Wooden case	40 x 37 x 39	20	60	113 x 95 x 160	750
RB 30-	1 pc Wooden case	47 x 46 x 46	25	36	116 x 113 x 157	570
RB 40-	1 pc Wooden case	48 x 47 x 49	30	24	76 x 110 x 156	470
RB 50-	1 pc Wooden case	54 x 51 x 52	40	24	92 x 127 x 185	720
RB 60-	1 pc carton		49	18	96 x 144 x 168	806
RB 80-	1 pc Wooden case	80 x 62 x 70	125			

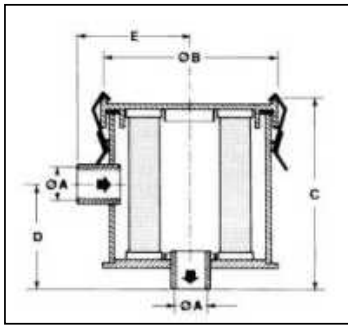
Dimension

English

Side Channel Blowers for Vacuum and Pressure



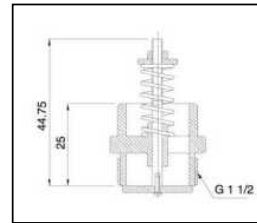
Inlet-Filter for Blowers								
Type	Machine	φA	φB	C	D	E	Wt. Kg	Cartridge
F4	RB20-	1"	97	90	12	98	0.3	C4
F5	RB30-	1" 1/4	152	105	15	86	0.4	C5
F6	RB40-	1" 1/2	152	105	15	86	0.4	C6
F7	RB50-/60-	2"	192	162	18	145	0.9	C7



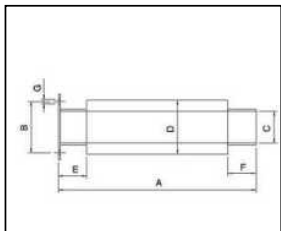
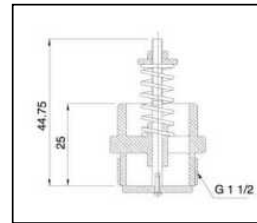
In-line Filter for Suction								
Type	Machine	φA	φB	C	D	E	Wt. Kg	Element
IF4	RB20-	1"	133	102	53	78	1	FE4A
IF5	RB30-	1" 1/4	170	158	93	96	1.8	FE5A
IF6	RB40-	1" 1/2	170	188	124	100	2.1	FE6A
IF7	RB50-/60-	2"	200	258	124	114	3.8	FE7A



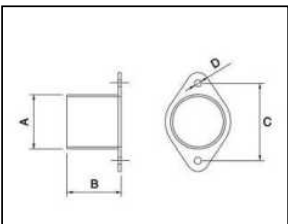
Pressure relief valve for blowers		
Type	Machine	Wt. Kg
FR1	For RB40 / RB50 / RB60	0.4



Vacuum relief valve for suction		
Type	Machine	Wt. Kg
VR1	For RB40 / RB50 / RB60	0.4



Additional Silencer								
Type	Machine	A	B	C	D	E	G	Wt. Kg
AS1	RB20-/30-	260	55-64	38	60	40	6.5	0.85
AS2	RB40-	280	72	50	76	40	6.5	1.01
AS3	RB50-/60-	280	82.5	60	89	40	9	1.4



Hose Flange						
Type	Machine	A	B	C	D	Wt. Kg
HF1	RB20-/30-	38.1	50	55-64	6.5	0.2
HF2	RB40-	50.8	50	72	6.5	0.2
HF3	RB50-/60-	60	50	82.5	9	0.2

Accessories

Soufflantes pour Vide et Pression

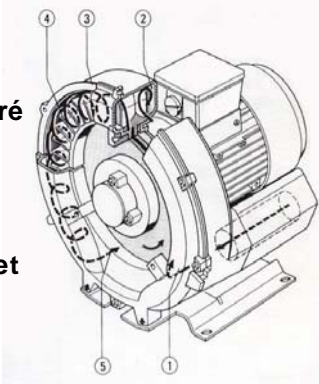
1) L'air entre par le port et est aspiré par les lames de la roue.

2) Le design unique à haut rendement de la roue accélère et pousse le gaz/air dans le canal latéral.

3) dans ce canal latéral, cette vitesse est convertie en pression/vide qui est poussée à nouveau vers la roue

4) le chemin en spirale du gaz/air continue jusqu'à la sortie

5) le process de régénération est le résultat d'une différence de haute pression



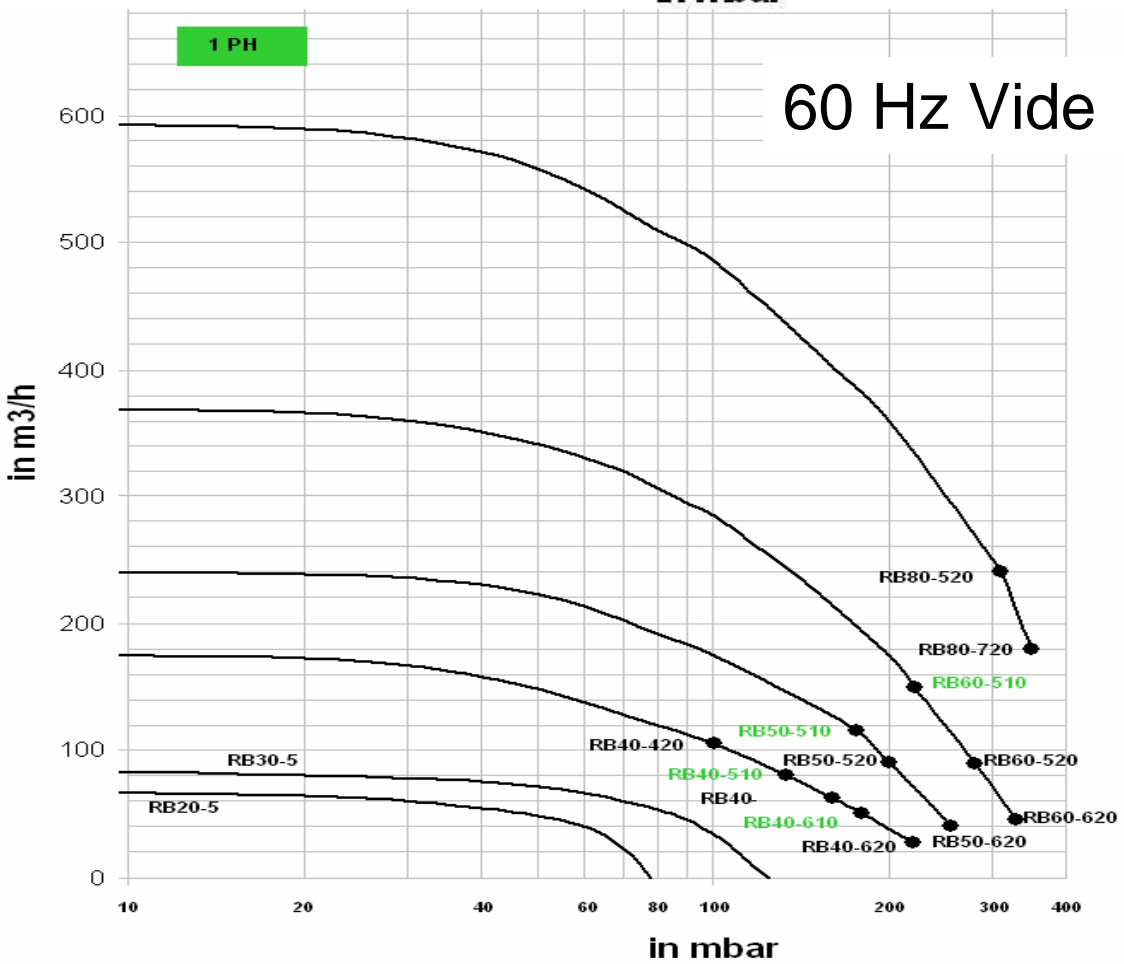
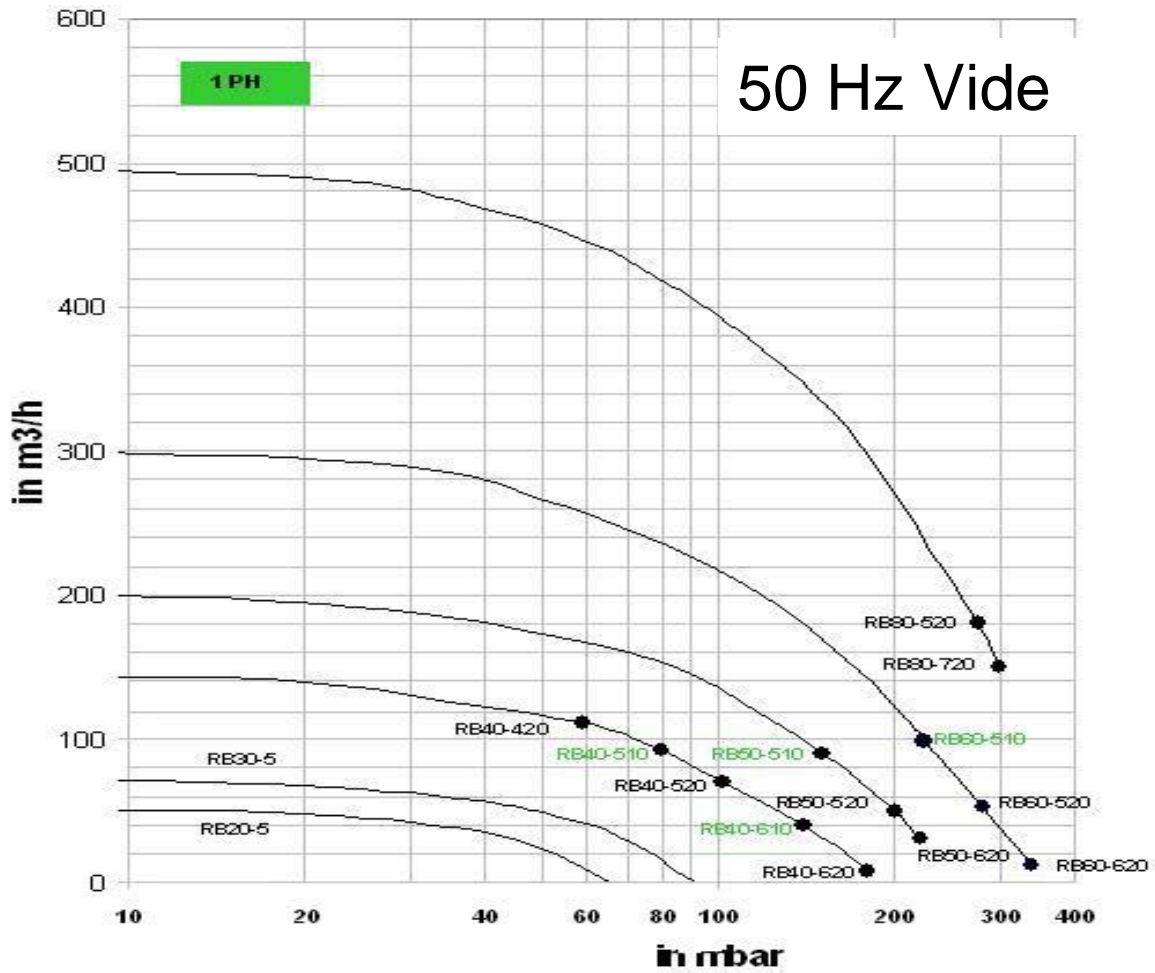
Caracteristiques	Applications Types
- Material garanti 24 mois	- Agitation
- Normes CE / UL / CSA	- Aquaculture
- Sans maintenance	- Aeration de Bassin
- Debit sans pulsation	- Aspirateur Industriel
- Fonctionnement silencieux	- Analyseur de gaz
- Moteurs electriques IP54; Multi tensions et frequences	- Balneotherapie / Spa
- Conception compacte et legere	- Faconnage du papier et carton
	- Machine d'imprimerie et textile
	- Machined;emballage
	- Prehension d'objets
	- Sechage
	- Transport pneumatique

Serie	Model e	Debit max (Nm3/h)	Pression max (mbar)	Depressio n max (mbar)	Voltage	Phase	Hz	Puissance (kW)	Poids (kg)
RB20	RB20-510	58	65	60	100-120 V / 200-240 V	1 Ph	50Hz / 60HZ	0.22 kW	10
	RB20-520	58	65	60	200-240 V / 380-440 V	3 Ph	50Hz / 60HZ	0.22 kW	10
RB30	RB30-510	75	100	95	100-120 V / 200-240 V	1 Ph	50Hz / 60HZ	0.38 kW	13
	RB30-520	75	100	95	200-240 V / 380-440 V	3 Ph	50Hz / 60HZ	0.38 kW	13
RB40	RB40-510	144	160	150	100-120 V / 200-240 V	1 Ph	50Hz / 60HZ	0.8 kW	16
	RB40-610	144	190	170	100-120 V / 200-240 V	1 Ph	50Hz / 60HZ	1.1 kW	18.2
	RB40-420	144	140	140	200-240 V / 380-440 V	3 Ph	50Hz / 60HZ	0.76 kW	15.5
	RB40-520	144	180	170	200-240 V / 380-440 V	3 Ph	50Hz / 60HZ	0.9 kW	16
	RB40-620	144	200	180	200-240 V / 380-440 V	3 Ph	50Hz / 60HZ	1.1 kW	18.2
RB50	RB50-510	210	200	185	100-120 V / 200-240 V	1 Ph	50Hz / 60HZ	1.5 kW	23.5
	RB50-520	210	220	210	200-240 V / 380-440 V	3 Ph	50Hz / 60HZ	1.5 kW	23.5
	RB50-620	210	270	220	200-240 V / 380-440 V	3 Ph	50Hz / 60HZ	2.2 kW	26
RB60	RB60-520	306	220	230	200-240 V / 380-440 V	3 Ph	50Hz / 60HZ	2.2 kW	36
	RB60-620	306	280	250	200-240 V / 380-440 V	3 Ph	50Hz / 60HZ	3 kW	37.3
	RB60-720	306	340	270	200-240 V / 380-440 V	3 Ph	50Hz / 60HZ	4 kW	41.5
RB80	RB80-520	500	310	270	200-240 V / 380-440 V	3 Ph	50Hz / 60HZ	5.5 kW	
	RB80-620	500	400	300	200-240 V / 380-440 V	3 Ph	50Hz / 60HZ	7.5 kW	

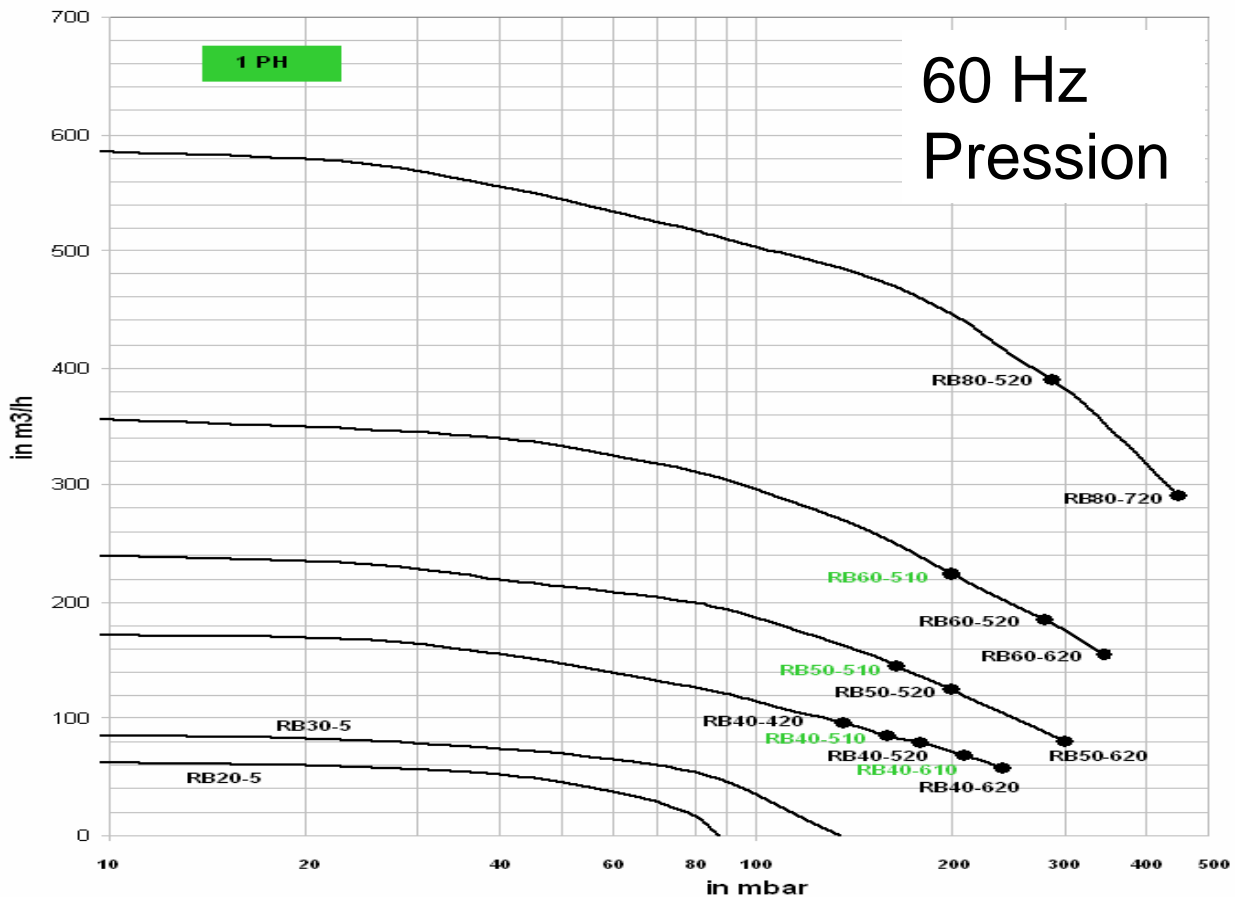
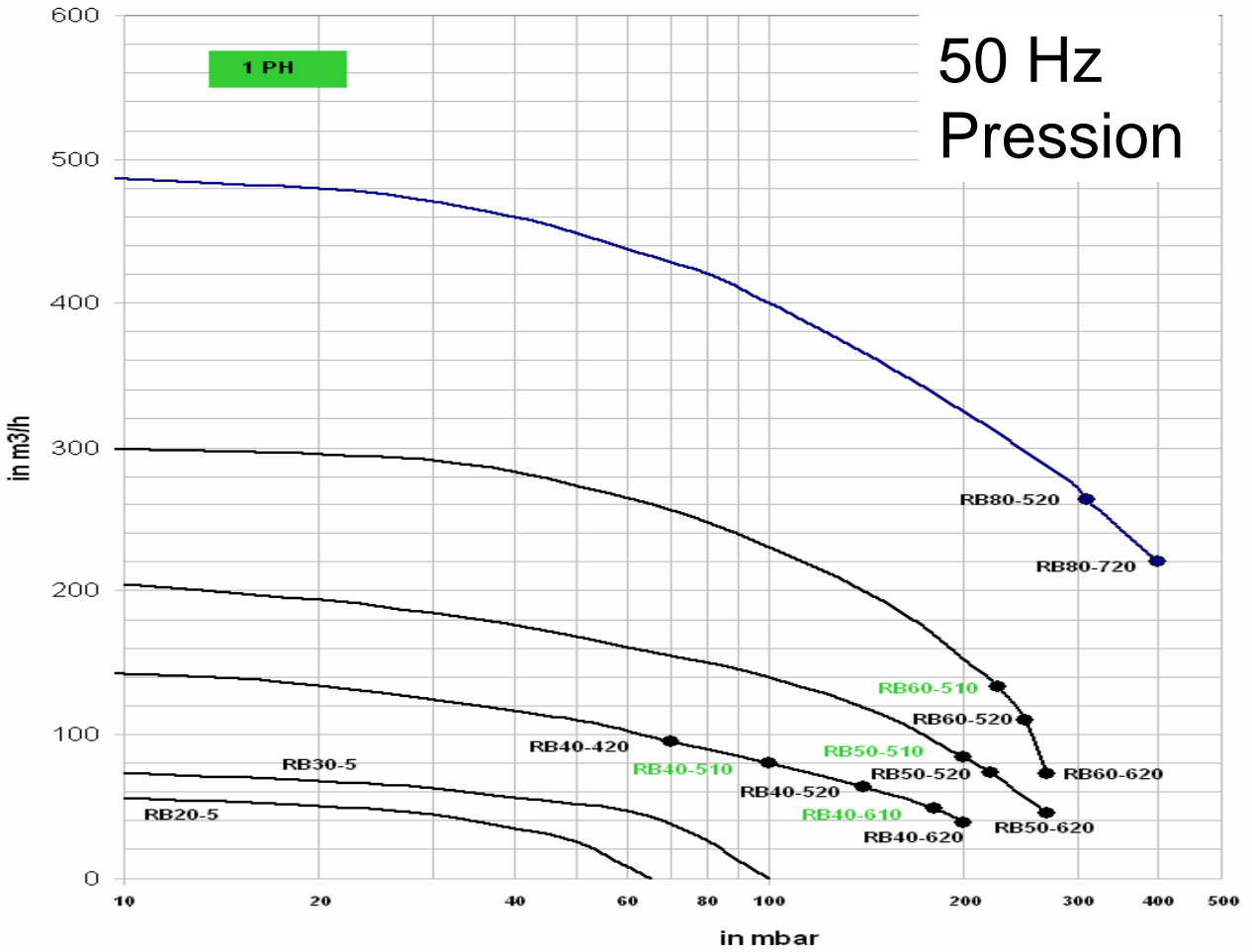
Francaise

Soufflantes pour Vide et Pression

Deutsch



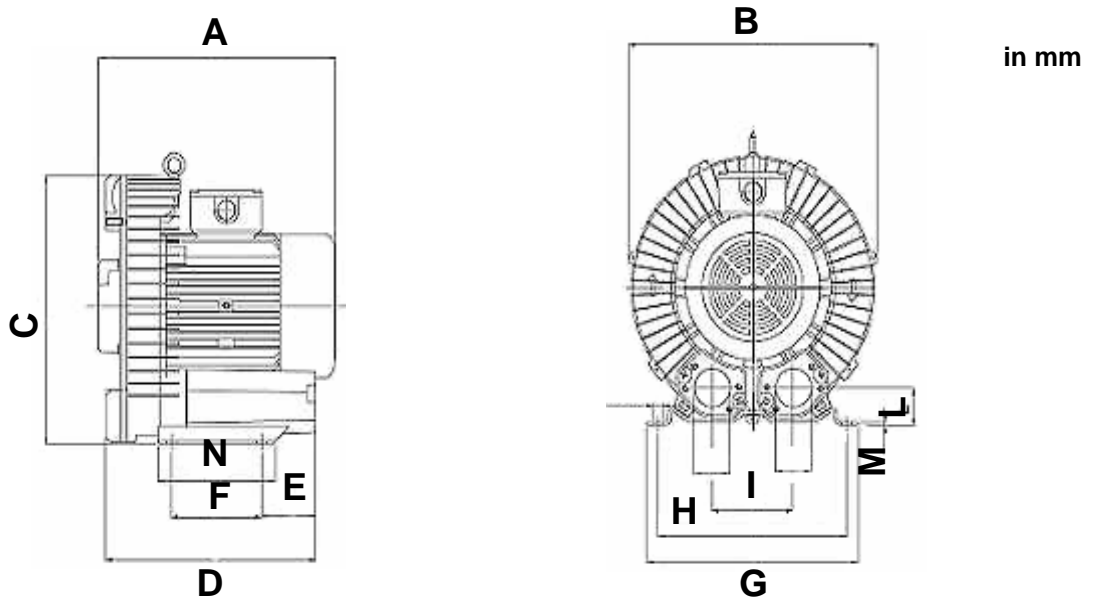
Soufflantes pour Vide et Pression



Deutsch

Soufflantes pour Vide et Pression

Model	A	B	C	D	E	F	G	H	I	L	M	N	Ø 1	Ø 2	net kg
RB 20-510	255	228	238	218	87	76	212	190	90	34	12	100	1"	1"	10
RB 20-520	255	228	238	218	87	76	212	190	90	34	12	100	1"	1"	10
RB 30-510	256	250	257	262	117	83	230	205	100	38	12	110	1" 1/4	1" 1/2	13
RB 30-520	256	250	257	262	117	83	230	205	100	38	12	110	1" 1/4	1" 1/2	13
RB 40-510	262	286	303	238	68	95	255	225	115	46	3	130	1" 1/2	1" 1/2	16
RB 40-610	281	286	303	238	68	95	255	225	115	46	3	130	1" 1/2	1" 1/2	18,2
RB 40-420	261	286	303	238	68	95	255	225	115	46	3	130	1" 1/2	1" 1/2	15,5
RB 40-520	262	286	303	238	68	95	255	225	115	46	3	130	1" 1/2	1" 1/2	16
RB 40-620	281	286	303	238	68	95	255	225	115	46	3	130	1" 1/2	1" 1/2	18,2
RB 50-510	317	33	345	342	143	115	296	260	120	48	4	155	2"	2"	23,5
RB 50-520	317	33	345	342	143	115	296	260	120	48	4	155	2"	2"	23,5
RB 50-620	317	33	345	341	143	115	296	260	120	48	4	155	2"	2"	26
RB 60-520	364	382	383	379	129	140	325	390	125	53	5	180	2"	2"	36
RB 60-620	364	382	383	379	129	140	325	390	125	53	5	180	2"	2"	37,3
RB 60-720	364	382	383	379	129	140	325	390	125	53	5	180	2"	2"	41,5
RB 80520	479	466	498	477	179	277	420	365	145	81	24	316	2" 1/2	2" 1/2	120
RB 80620	479	466	498	477	179	277	420	365	145	81	24	316	2" 1/2	2" 1/2	123

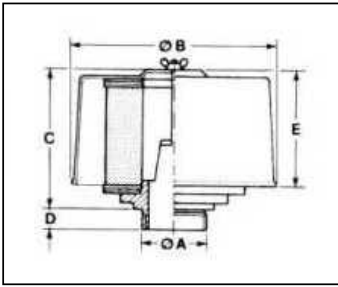


Modell	Package Unit per blower	Dimension (cm) approx	Gross Weight in kg	Units per Pallet	Dimension (cm) approx	Gross Weight in kg
RB 20-	1 pc Wooden case	40 x 37 x 39	20	60	113 x 95 x 160	750
RB 30-	1 pc Wooden case	47 x 46 x 46	25	36	116 x 113 x 157	570
RB 40-	1 pc Wooden case	48 x 47 x 49	30	24	76 x 110 x 156	470
RB 50-	1 pc Wooden case	54 x 51 x 52	40	24	92 x 127 x 185	720
RB 60-	1 pc carton		49	18	96 x 144 x 168	806
RB 80-	1 pc Wooden case	80 x 62 x 70	125			

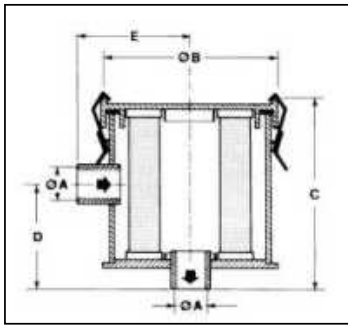
Dimension

Francaise

Soufflantes pour Vide et Pression



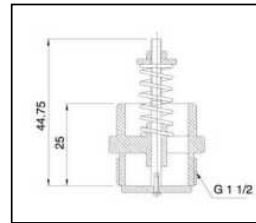
Inlet-Filter for Blowers								
Type	Machine	φA	φB	C	D	E	Wt. Kg	Cartridge
F4	RB20-	1"	97	90	12	98	0.3	C4
F5	RB30-	1" 1/4	152	105	15	86	0.4	C5
F6	RB40-	1" 1/2	152	105	15	86	0.4	C6
F7	RB50-/60-	2"	192	162	18	145	0.9	C7



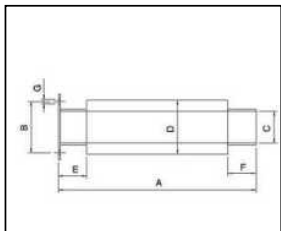
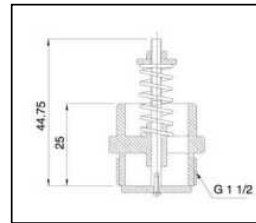
In-line Filter for Suction								
Type	Machine	φA	φB	C	D	E	Wt. Kg	Element
IF4	RB20-	1"	133	102	53	78	1	FE4A
IF5	RB30-	1" 1/4	170	158	93	96	1.8	FE5A
IF6	RB40-	1" 1/2	170	188	124	100	2.1	FE6A
IF7	RB50-/60-	2"	200	258	124	114	3.8	FE7A



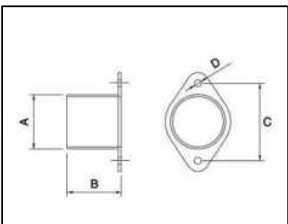
Pressure relief valve for blowers		
Type	Machine	Wt. Kg
FR1	For RB40 / RB50 / RB60	0.4



Vacuum relief valve for suction		
Type	Machine	Wt. Kg
VR1	For RB40 / RB50 / RB60	0.4

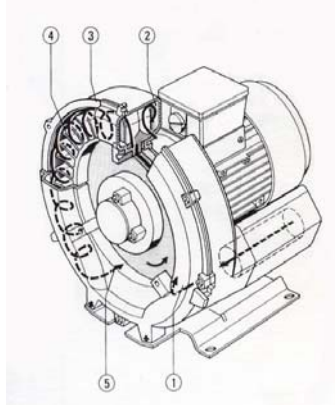


Additional Silencer								
Type	Machine	A	B	C	D	E	G	Wt. Kg
AS1	RB20-/30-	260	55-64	38	60	40	6.5	0.85
AS2	RB40-	280	72	50	76	40	6.5	1.01
AS3	RB50-/60-	280	82.5	60	89	40	9	1.4



Hose Flange						
Type	Machine	A	B	C	D	Wt. Kg
HF1	RB20-/30-	38.1	50	55-64	6.5	0.2
HF2	RB40-	50.8	50	72	6.5	0.2
HF3	RB50-/60-	60	50	82.5	9	0.2

Soplanes de Canal Lateral por Vacio e Presion

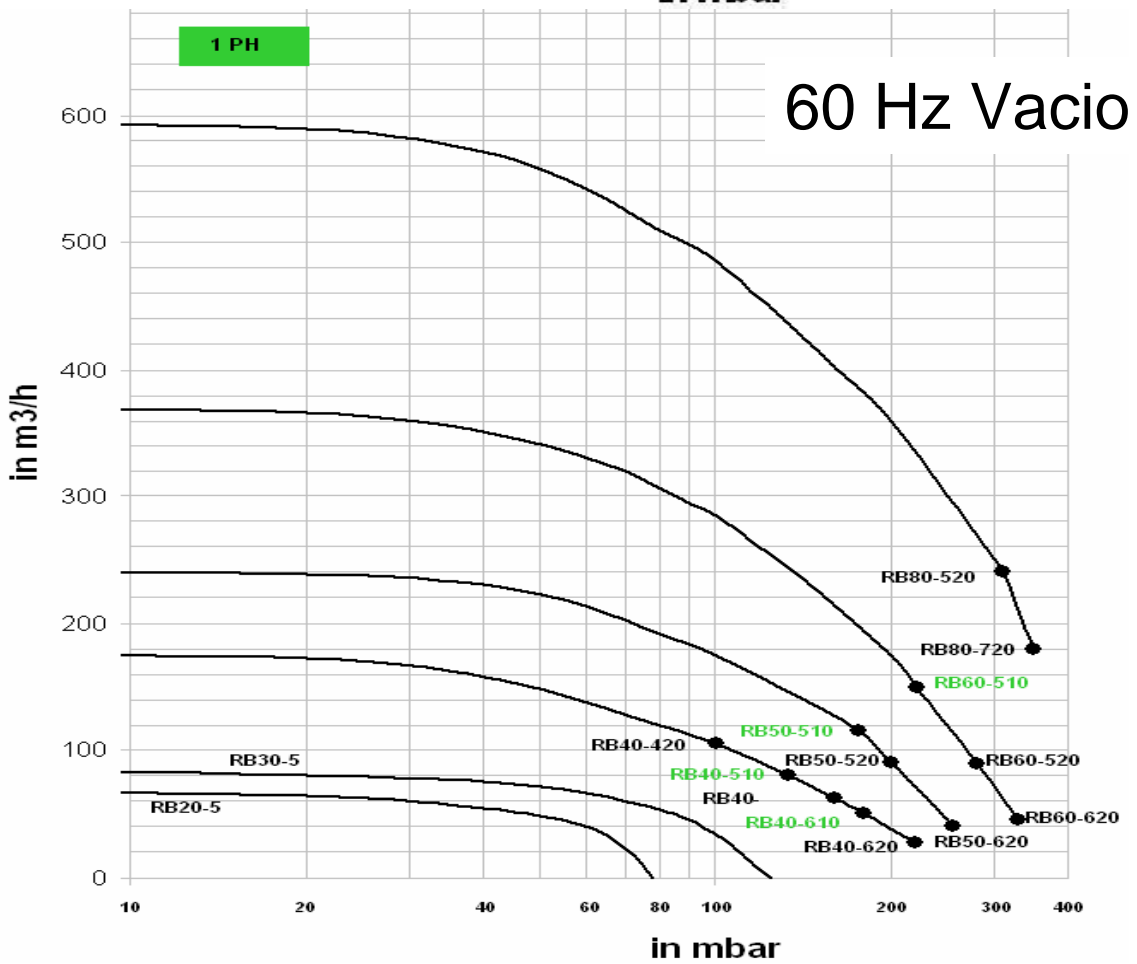
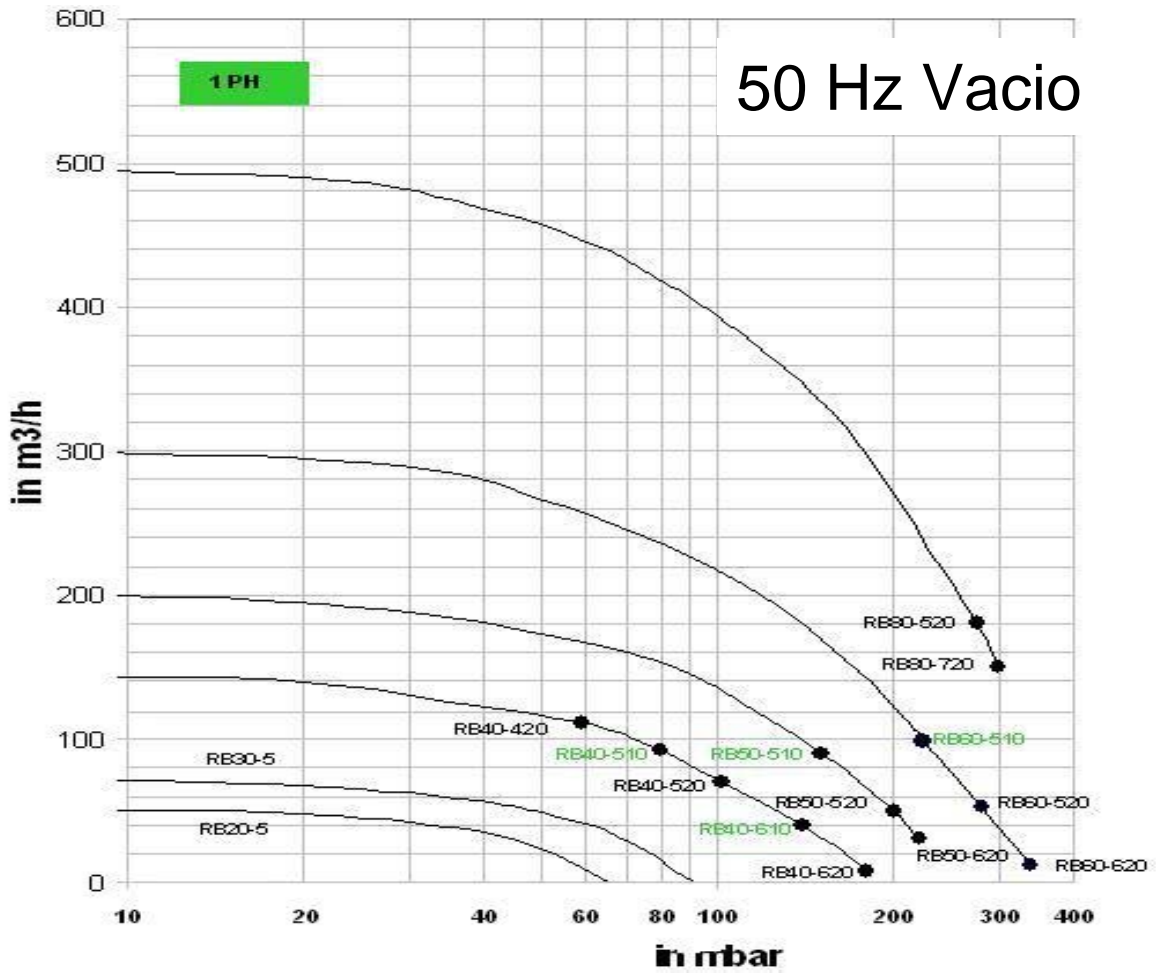


Series	Model	max open Flow (Nm ³ /h)	max Precion (mbar)	max. Vacio (mbar)	Voltage	Phase	Hz	Power (kW)	Weight (kg)
RB20	RB20-510	58	65	60	100-120 V / 200-240 V	1 Ph	50Hz / 60HZ	0.22 kW	10
	RB20-520	58	65	60	200-240 V / 380-440 V	3 Ph	50Hz / 60HZ	0.22 kW	10
RB30	RB30-510	75	100	95	100-120 V / 200-240 V	1 Ph	50Hz / 60HZ	0.38 kW	13
	RB30-520	75	100	95	200-240 V / 380-440 V	3 Ph	50Hz / 60HZ	0.38 kW	13
RB40	RB40-510	144	160	150	100-120 V / 200-240 V	1 Ph	50Hz / 60HZ	0.8 kW	16
	RB40-610	144	190	170	100-120 V / 200-240 V	1 Ph	50Hz / 60HZ	1.1 kW	18.2
	RB40-420	144	140	140	200-240 V / 380-440 V	3 Ph	50Hz / 60HZ	0.76 kW	15.5
	RB40-520	144	180	170	200-240 V / 380-440 V	3 Ph	50Hz / 60HZ	0.9 kW	16
	RB40-620	144	200	180	200-240 V / 380-440 V	3 Ph	50Hz / 60HZ	1.1 kW	18.2
RB50	RB50-510	210	200	185	100-120 V / 200-240 V	1 Ph	50Hz / 60HZ	1.5 kW	23.5
	RB50-520	210	220	210	200-240 V / 380-440 V	3 Ph	50Hz / 60HZ	1.5 kW	23.5
	RB50-620	210	270	220	200-240 V / 380-440 V	3 Ph	50Hz / 60HZ	2.2 kW	26
RB60	RB60-520	306	220	230	200-240 V / 380-440 V	3 Ph	50Hz / 60HZ	2.2 kW	36
	RB60-620	306	280	250	200-240 V / 380-440 V	3 Ph	50Hz / 60HZ	3 kW	37.3
	RB60-720	306	340	270	200-240 V / 380-440 V	3 Ph	50Hz / 60HZ	4 kW	41.5
RB80	RB80-520	500	310	270	200-240 V / 380-440 V	3 Ph	50Hz / 60HZ	5.5 kW	
	RB80-620	500	400	300	200-240 V / 380-440 V	3 Ph	50Hz / 60HZ	7.5 kW	

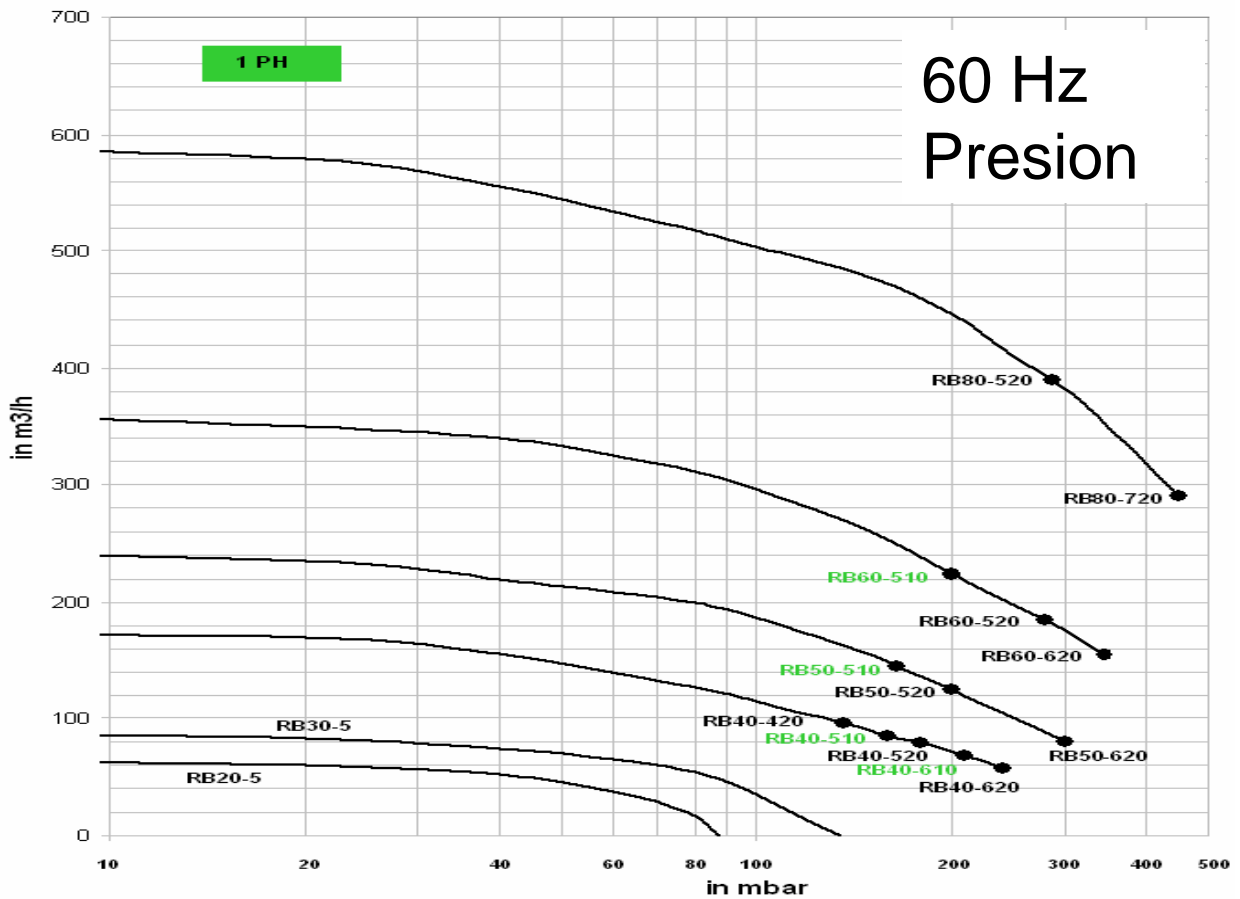
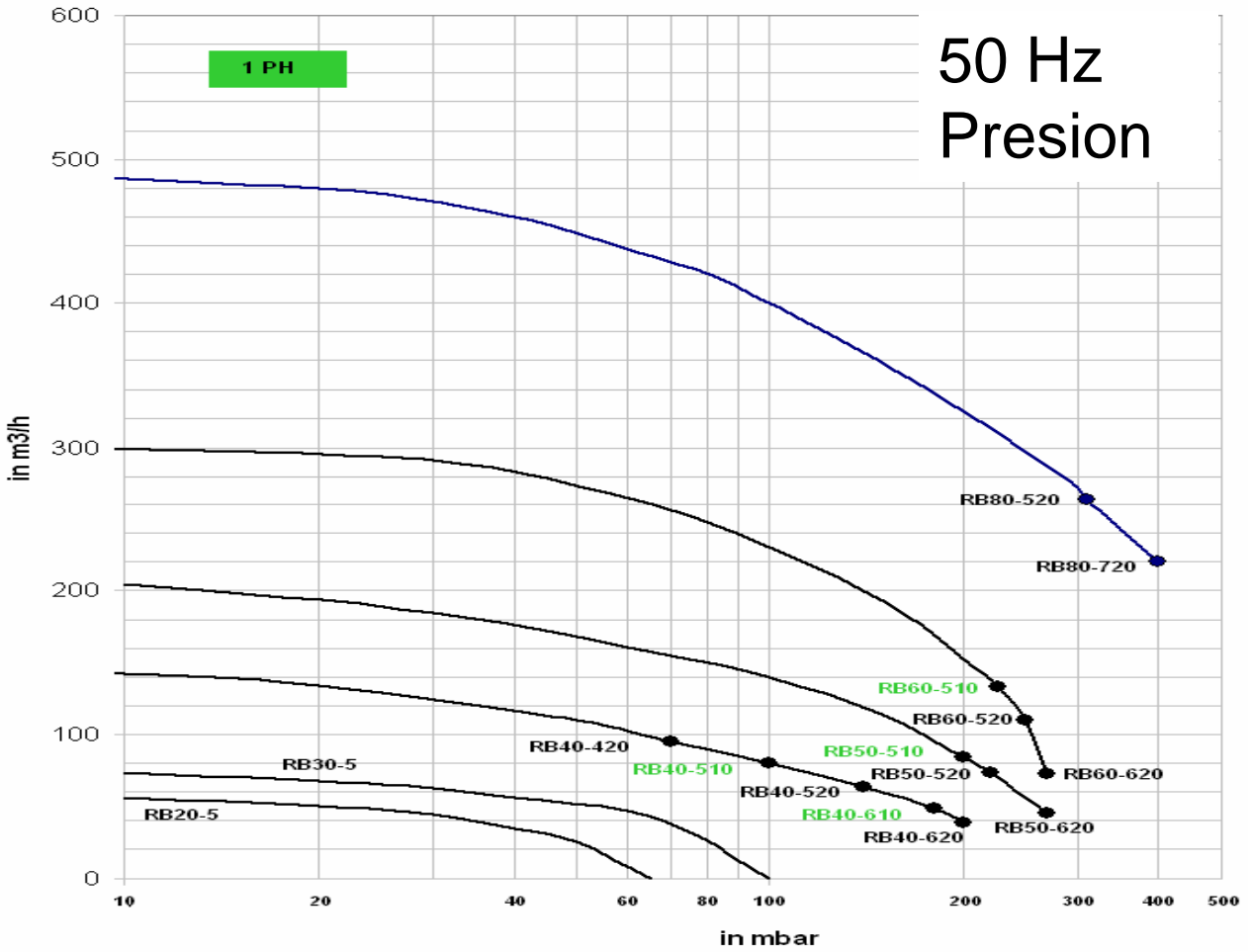
Español

Soplanes de Canal Lateral por Vacio e Presion

Deutsch



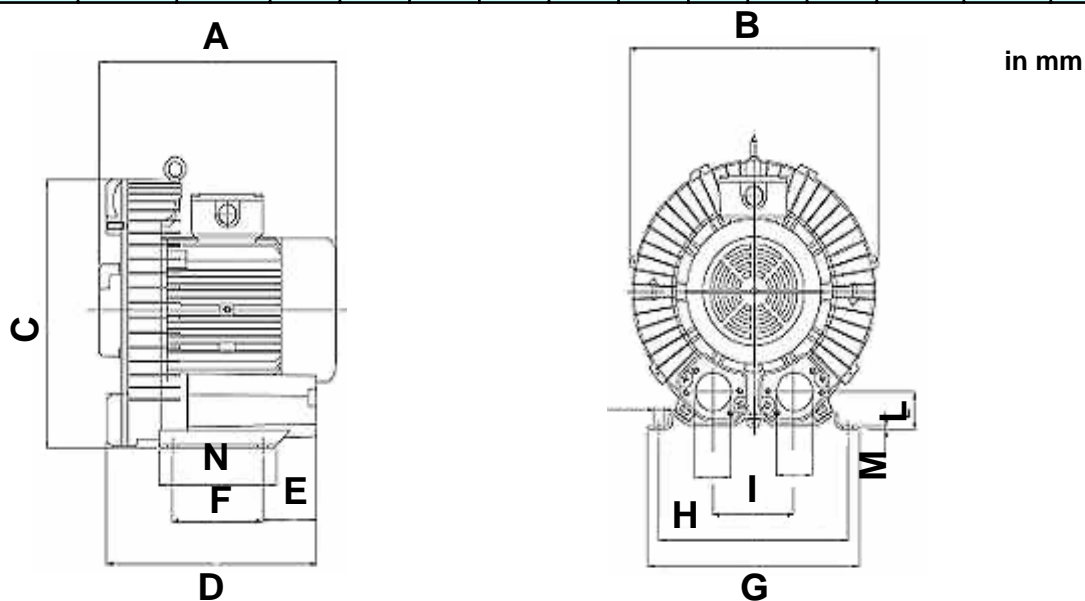
Soplanes de Canal Lateral por Vacio e Presion



Deutsch

Soplanes de Canal Lateral por Vacio e Presion

Model	A	B	C	D	E	F	G	H	I	L	M	N	Ø 1	Ø 2	net kg
RB 20-510	255	228	238	218	87	76	212	190	90	34	12	100	1"	1"	10
RB 20-520	255	228	238	218	87	76	212	190	90	34	12	100	1"	1"	10
RB 30-510	256	250	257	262	117	83	230	205	100	38	12	110	1" 1/4	1" 1/2	13
RB 30-520	256	250	257	262	117	83	230	205	100	38	12	110	1" 1/4	1" 1/2	13
RB 40-510	262	286	303	238	68	95	255	225	115	46	3	130	1" 1/2	1" 1/2	16
RB 40-610	281	286	303	238	68	95	255	225	115	46	3	130	1" 1/2	1" 1/2	18,2
RB 40-420	261	286	303	238	68	95	255	225	115	46	3	130	1" 1/2	1" 1/2	15,5
RB 40-520	262	286	303	238	68	95	255	225	115	46	3	130	1" 1/2	1" 1/2	16
RB 40-620	281	286	303	238	68	95	255	225	115	46	3	130	1" 1/2	1" 1/2	18,2
RB 50-510	317	33	345	342	143	115	296	260	120	48	4	155	2"	2"	23,5
RB 50-520	317	33	345	342	143	115	296	260	120	48	4	155	2"	2"	23,5
RB 50-620	317	33	345	341	143	115	296	260	120	48	4	155	2"	2"	26
RB 60-520	364	382	383	379	129	140	325	390	125	53	5	180	2"	2"	36
RB 60-620	364	382	383	379	129	140	325	390	125	53	5	180	2"	2"	37,3
RB 60-720	364	382	383	379	129	140	325	390	125	53	5	180	2"	2"	41,5
RB 80520	479	466	498	477	179	277	420	365	145	81	24	316	2" 1/2	2" 1/2	120
RB 80620	479	466	498	477	179	277	420	365	145	81	24	316	2" 1/2	2" 1/2	123

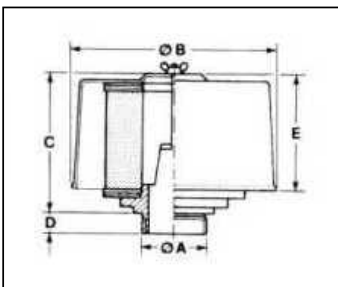


Modell	Package Unit per blower	Dimension (cm) approx	Gross Weight in kg	Units per Pallet	Dimension (cm) approx	Gross Weight in kg
RB 20-	1 pc Wooden case	40 x 37 x 39	20	60	113 x 95 x 160	750
RB 30-	1 pc Wooden case	47 x 46 x 46	25	36	116 x 113 x 157	570
RB 40-	1 pc Wooden case	48 x 47 x 49	30	24	76 x 110 x 156	470
RB 50-	1 pc Wooden case	54 x 51 x 52	40	24	92 x 127 x 185	720
RB 60-	1 pc carton		49	18	96 x 144 x 168	806
RB 80-	1 pc Wooden case	80 x 62 x 70	125			

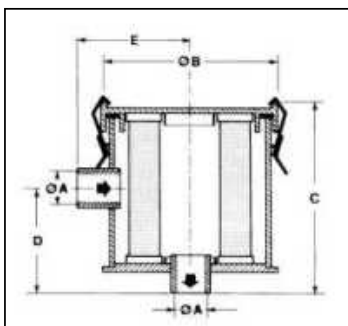
Dimension

Francaise

Soufflantes pour Vide et Pression



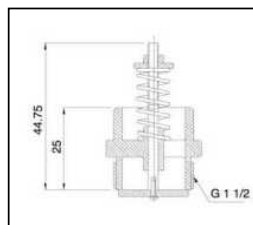
Inlet-Filter for Blowers								
Type	Machine	ØA	ØB	C	D	E	Wt. Kg	Cartridge
F4	RB20-	1"	97	90	12	98	0.3	C4
F5	RB30-	1" 1/4	152	105	15	86	0.4	C5
F6	RB40-	1" 1/2	152	105	15	86	0.4	C6
F7	RB50-/60-	2"	192	162	18	145	0.9	C7



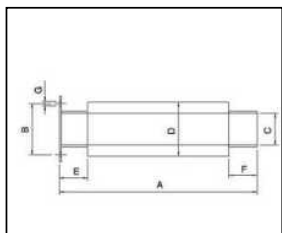
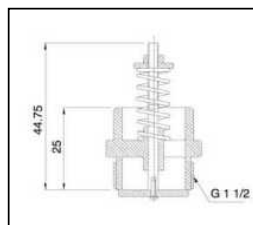
In-line Filter for Suction								
Type	Machine	ØA	ØB	C	D	E	Wt. Kg	Element
IF4	RB20-	1"	133	102	53	78	1	FE4A
IF5	RB30-	1" 1/4	170	158	93	96	1.8	FE5A
IF6	RB40-	1" 1/2	170	188	124	100	2.1	FE6A
IF7	RB50-/60-	2"	200	258	124	114	3.8	FE7A



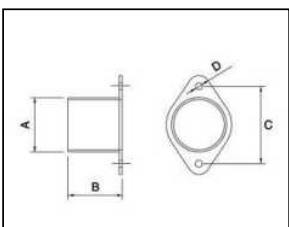
Pressure relief valve for blowers		
Type	Machine	Wt. Kg
FR1	For RB40 / RB50 / RB60	0.4



Vacuum relief valve for suction		
Type	Machine	Wt. Kg
VR1	For RB40 / RB50 / RB60	0.4



Additional Silencer								
Type	Machine	A	B	C	D	E	G	Wt. Kg
AS1	RB20-/30-	260	55-64	38	60	40	6.5	0.85
AS2	RB40-	280	72	50	76	40	6.5	1.01
AS3	RB50-/60-	280	82.5	60	89	40	9	1.4



Hose Flange						
Type	Machine	A	B	C	D	Wt. Kg
HF1	RB20-/30-	38.1	50	55-64	6.5	0.2
HF2	RB40-	50.8	50	72	6.5	0.2
HF3	RB50-/60-	60	50	82.5	9	0.2

Accesorios



**European *T*echnical *C*enter
for Engineering & Distribution GmbH**

Am Gruendl 38
91093 Hessdorf
Germany
www.etc-distribution.com

Tel: +49 (0)9135 72 17 200
Fax: +49 (0)9135 72 17 202
Mobil: +49 (0) 172 85 64 944
mgottesbueren@etc-distribution.com

Amtsgericht Nürnberg
HRB:
Mehrwertsteuernr.: DE
Geschäftsführer: Dipl.-Ing Matthias Gottesbüren